

# Instructions to import a 64-bit linux virtual machine (VM) from an OVA file in Windows

Diego Garrido Martín

10/02/2021

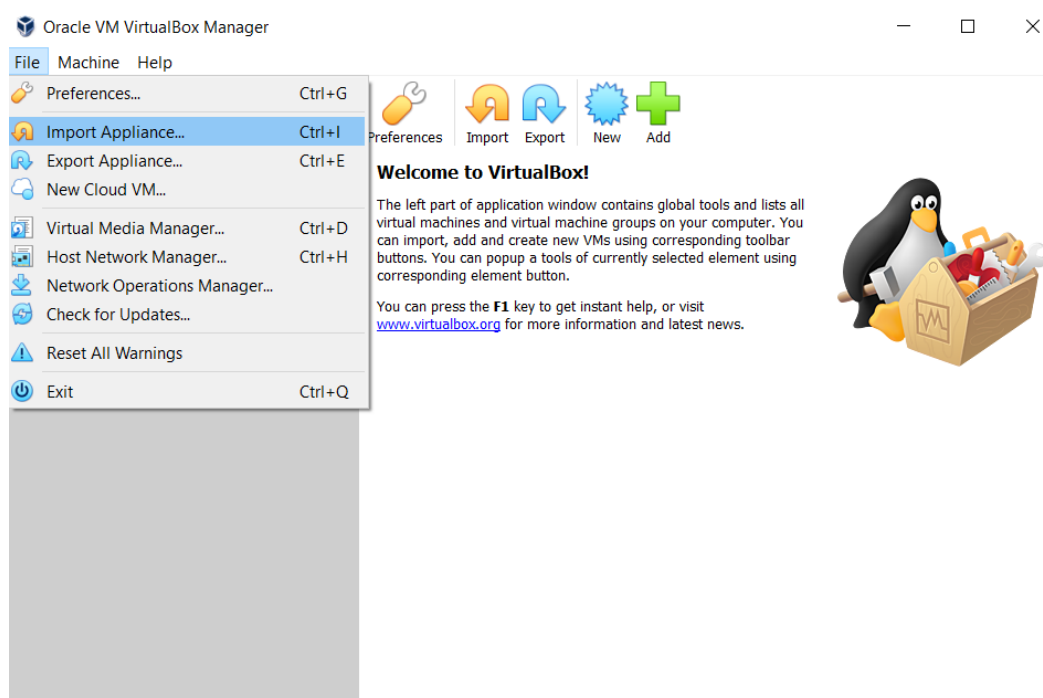
1. **Download** the [OVA](#) file (approx. 6 GB) in Windows

2. **Install** [VirtualBox](#) or [VMware Workstation Player](#)

3. **Import** the OVA

- [VirtualBox users](#)

File -> Import appliance -> Import



## Appliance settings

These are the virtual machines contained in the appliance and the suggested settings of the imported VirtualBox machines. You can change many of the properties shown by double-clicking on the items and disable others using the check boxes below.

Virtual System 1

Name	Ubuntu20withDocker 1
Guest OS Type	Ubuntu (64-bit)
CPU	1
RAM	2048 MB
DVD	<input checked="" type="checkbox"/>
USB Controller	<input checked="" type="checkbox"/>
Sound Card	<input checked="" type="checkbox"/>
Network Adapter	<input checked="" type="checkbox"/>
Storage Controller	<input checked="" type="checkbox"/>
Storage Controller	<input checked="" type="checkbox"/>
Storage Controller	<input checked="" type="checkbox"/>
Virtual Disk	<input checked="" type="checkbox"/>
Base Folder	C:\Users\admin\VirtualBox VMs
Primary Group	/

Machine Base Folder: C:\Users\admin\VirtualBox VMs

MAC Address Policy: Include only NAT network adapter MAC addresses

Additional Options:  Import hard drives as VDI

Appliance is not signed

Restore Defaults Import Cancel

- VMWare Workstation Player users

Open a Virtual Machine -> Import -> **Retry**

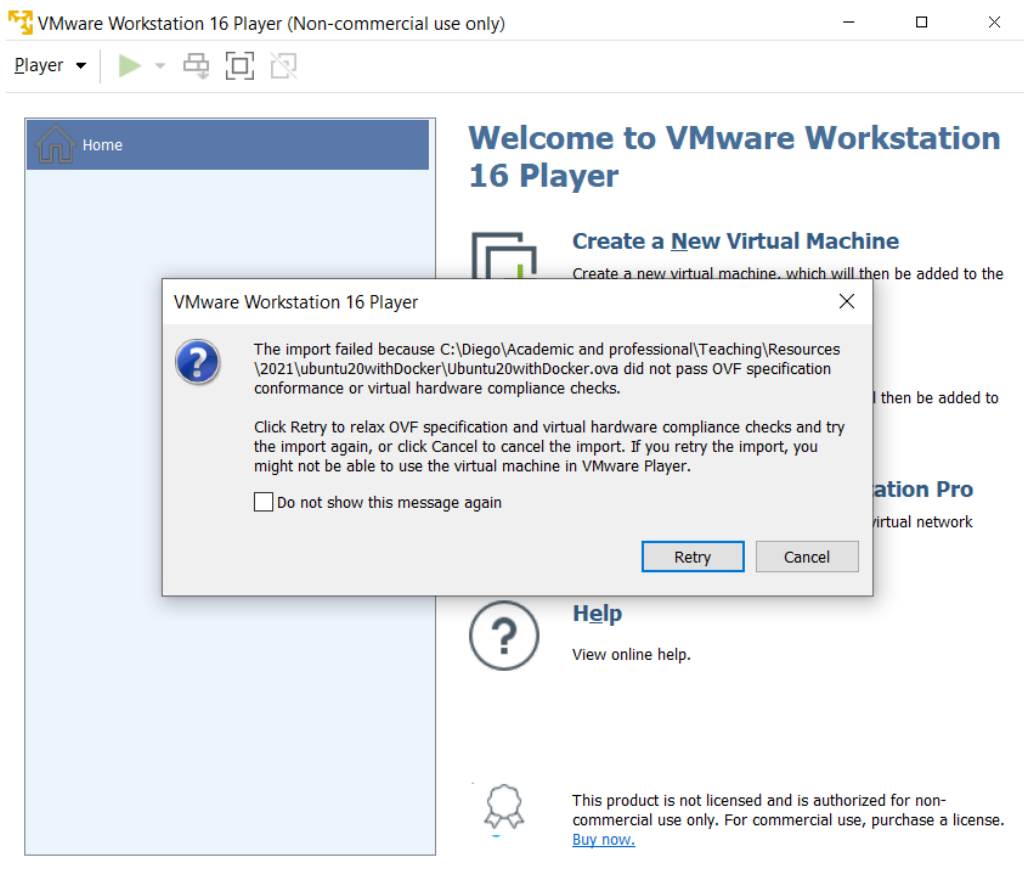
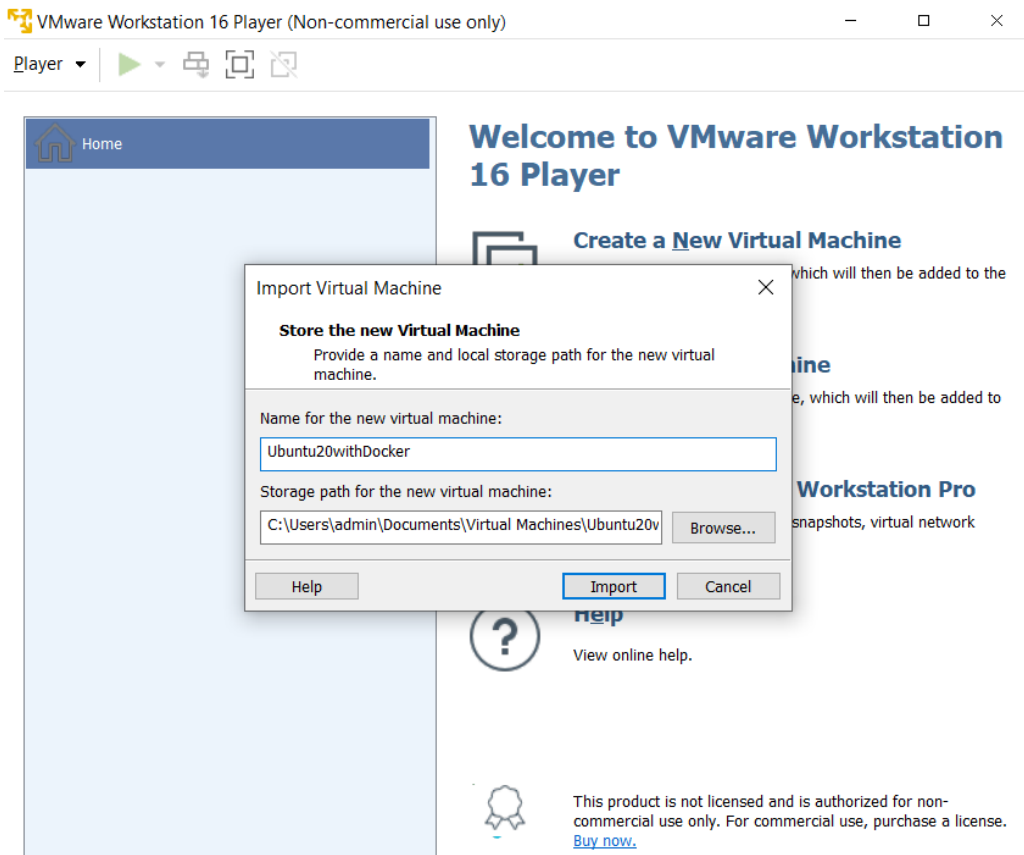
VMware Workstation 16 Player (Non-commercial use only)

Player

### Welcome to VMware Workstation 16 Player

- Create a New Virtual Machine**  
Create a new virtual machine, which will then be added to the top of your library.
- Open a Virtual Machine**  
Open an existing virtual machine, which will then be added to the top of your library.
- Upgrade to VMware Workstation Pro**  
Get advanced features such as snapshots, virtual network management, and more.
- Help**  
View online help.

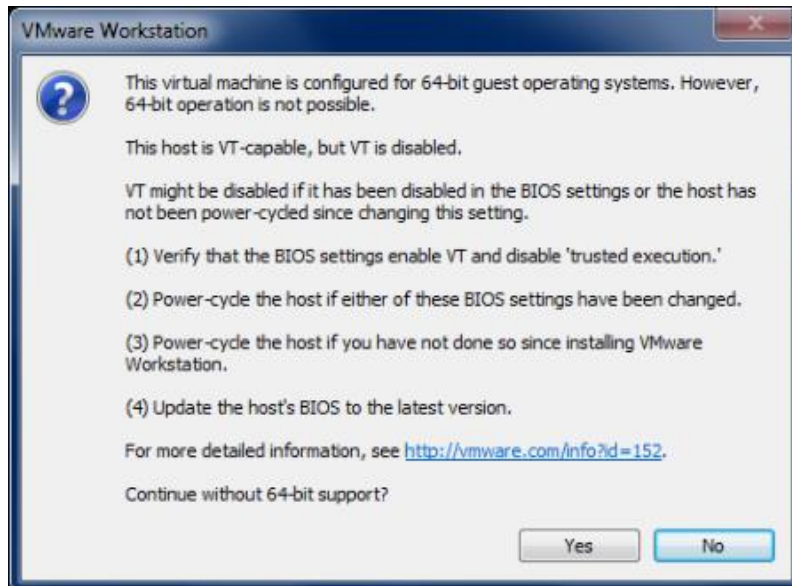
This product is not licensed and is authorized for non-commercial use only. For commercial use, purchase a license. [Buy now.](#)



#### 4. Power on the VM (user: me, password: pwd)

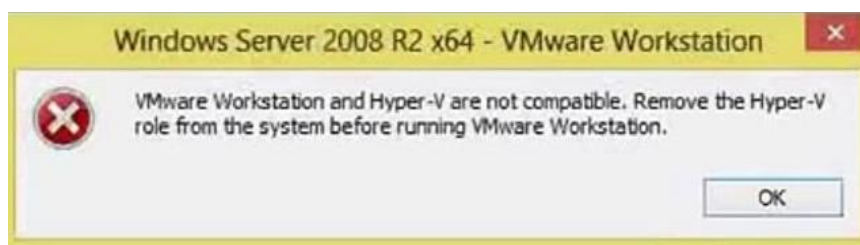
##### Potential problems at this point:

A) You might get a message like this one:

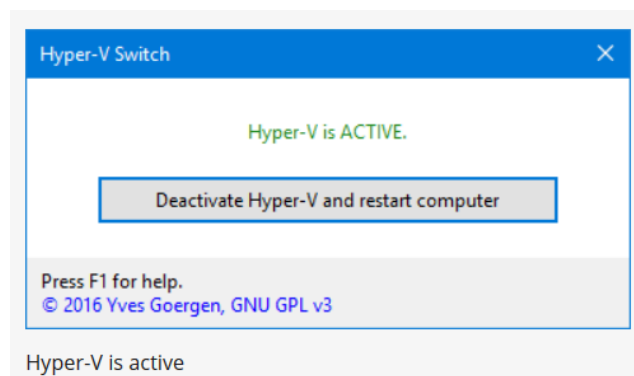


In that case, **you should restart your computer, open the BIOS and enable virtualization.** Then the VM will work.

B) You can also get an error similar to this one:



In this case, you should download [HyperVSwitch](#). When executing it, you will get a message like this:



You should **click on the box to deactivate hyper-V and restart your computer.** Then the VM will work. You can always revert this step in the future.