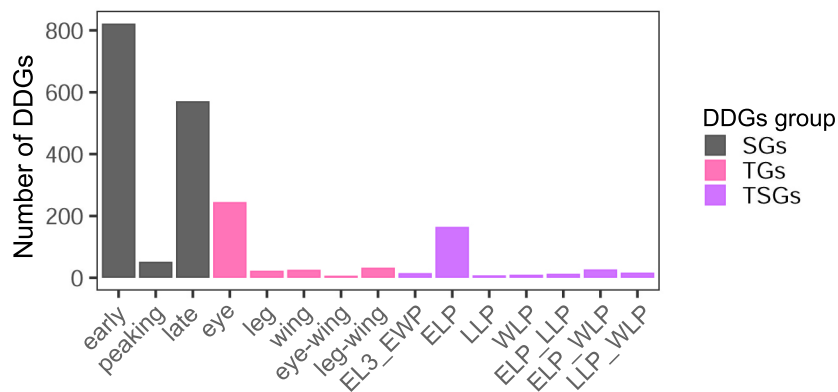


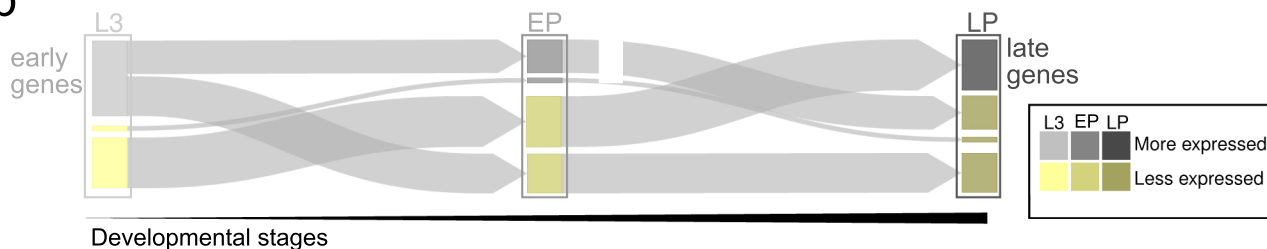
a

SGs	early	822
	peaking	52
	late	571
TGs	eye	245
	leg	23
	wing	26
	eye-wing	7
	leg-wing	33

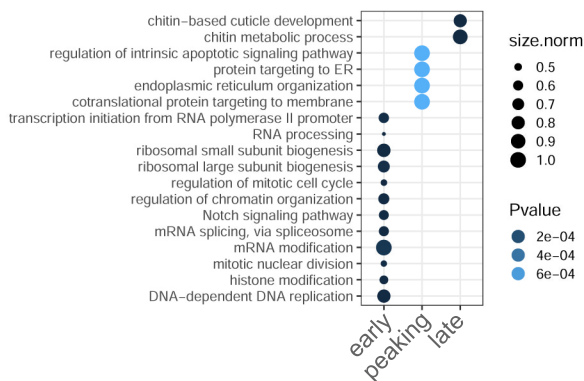
TSGs	EL3-EWP	15
	ELP	165
	LLP	8
	WLP	10
	ELP-LLP	13
	ELP-WLP	27
	LLP-WLP	17



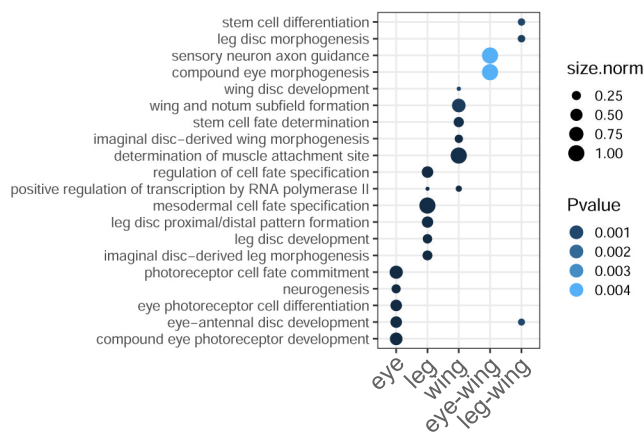
b



c



d



e

